



Taizhou Sanfine Tools Co., Ltd

CONTENT

目录

01⁺

Electric Airless
paint sprayer

--DIY Airless paint sprayer
(6~10)

--Piston pump/Electric Airless
paint sprayer With Brush
(11~14)

--Piston pump/Electric Airless
paint sprayer Brushless
(15~22)

--Diaphragm pump/Electric
Airless paint sprayer
(23~24)

02⁺

Pneumatic paint sprayer &
Air powered Paint Tools

--Piston pump pneumatic
paint sprayer
(25~28)

--Air powered paint equipment
and tools
(29~31)

03⁺

Line Marking Machine
& Booster

--Cold spraying road
line machine
(32~35)

--Hot melt Thermoplastic
road line machine
(36)

--Road line Booster
(37)

--Line Remover
(38)

04⁺

Heavy Duty Hydraulic pump
airless paint sprayer

--PT980 putty sprayer
models
(39~40)

--PQ6 putty sprayer
models
(41~42)

--Heavy duty spray
equipment
(43~44)

05⁺

Screw pump
sprayer

--Waterproof Fireproof
paint sprayer
(45~46)

--Texture sprayer
(47~48)

--Plaster Cement mortar
sprayer
(49~51)

--Texture Plaster Cement
mortar mixer
(52)

06⁺

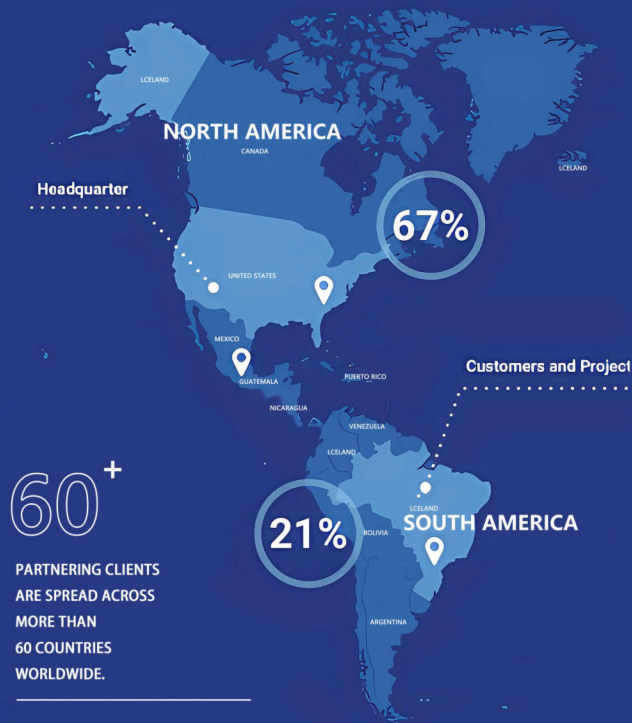
Other Heavy duty spray
equipment

--Polyurethane & Polyurea coating machine
(53)

--Gas-powered spray machine
(54)

--Heavy duty mortar pump spray machine
(55~57)

--PU waterproof spray machine with heater
(58~59)



THE COMPANY'S SALES NETWORK SPANS THE GLOBE

The company's sales network uses various channels and strategies to sell high-quality products and services to customers. The company's efficient sales network has wide market coverage, high sales efficiency, and high customer satisfaction.



Success Factors

In-depth Market Research

- Understand market trends and consumer needs to develop effective entry strategies.

High Adaptability

- Ability to adapt products and strategies flexibly to meet the requirements of different markets.

Continuous Innovation

- Continuously innovate to maintain competitiveness and adapt to market changes.

Localization Strategy

- Localize products and services according to the characteristics of the target market.

SPRAYING ADVANTAGE

PRODUCT ADVANTAGES
AND APPLICATIONS



High pressure airless sprayer of our company is controlled by microcomputer chips and features excellent performance, stable quality and advanced level at abroad. This sprayer boasts advantages such as compact structure, light weight, convenience for carrying, low noise, strong atomization, smooth coating, easy operation and high efficiency

It is mainly applied in spraying wall surfaces and metal surfaces. In particular, this machine is suitable for surface spraying of internal and external walls, office building, villa and hotel in modern architecture and decoration industry, as well as construction equipment in shipbuilding, steel structure and bridge. Such airless sprayer is ranked among one of the essential tools for modern surface spraying.

2000⁺

COLLABORATION WITH
NUMEROUS REPUTABLE BRANDS

2000⁺

NUMEROUS PRACTICAL
COOPERATION CASES

OUR STORY

我们的故事

Our company has cultivated in the field of spraying machine for 26 years,

And specializes in the production of airless paint sprayer, putty spray machines, road line marking machines for more than 26 years.

We fully understand that quality and service play fundamental roles in the survival and development of enterprise.

We devote ourselves into pursuing high-quality products and satisfactory services. We always keep informed of customers' requirements, make every effort to satisfy them, and overcome deficiencies. Moreover, we highlight quality and after-sale service of products. All your visits and suggestions are sincerely welcomed!

100

SANFINE

The group has
1,00 employees

10000

The base covers an area
of over 10,000 square
meters

200

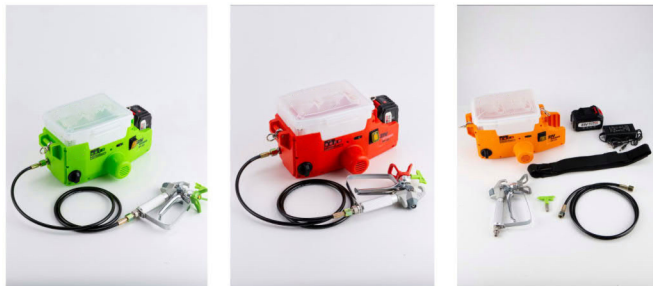
Our products are exported
to more than 200 countries
and regions worldwide

50

We have established strong
business relationships with
over 50 countries

DIY AIRLESS PAINT SPRAYER

SF-21 Lithium-Battery



Features:

- 500W brushless DC motor,21V-5AH lithium battery, Long use time
- Portable weighs 3.1KG, easy to carry and operate.
- with Max.pressure 17Mpa. flow rate 1.1L/min hopper capacity is 1.7L
- OEM colors:orange/green/red/white

Package(1 pc in box)	N.weight/G.weight	Qty/carton	Carton meas
37*23*29cm	1 pc weight 3.98kgs 4 pcs weight 15.92kgs	4 pcs in a carton	61*40*48cm
Machine*1 set	Battery*1pc Belt*1pc	Spray hose(1.5M)*1pc	Spray tip 416*1 spray gun*1pc

DIY AIRLESS PAINT SPRAYERS



SF-1425

PISTON PUMP AIRLESS SPRAYER

- Compact body, easy to carry, strong atomization.
- Suitable for spraying on walls and metal surfaces, including varnish, latex paint, oil paint, and stains.
- The perfect pump structure ensures long working hours. It is the first choice for individuals or entry-level contractors.

ITEM NO.	SF1425
Power	575W
Power requirement	220 - 240V/50HZ
Max.Pressure	200Bar(2900Psi)
Rate of Flow	1.7L/min
Max.tip	0.019in.
Weight	10KG
DxWxH (cm)	32x36x45(cm)
Support comes with	one gun one tip and tip guard 1.5M 1/4" high pressure hose 50 cm Extension pole

DIY AIRLESS PAINT SPRAYER

FEATURES:

- Superior craftsmanship, capable of 24-hour continuous operation.
- Selected motor, durable and robust.
- Rapid cooling system extends motor life and improves efficiency by 30% compared to other sprayers.
- Wide range of applications, suitable for home decoration spraying, ship painting, color steel tile spraying, wall coating, steel coating, roof painting, and more.



TECH DATA	
Power	750W
Voltage	220-240v 50Hz/110V 60Hz
Max Nozzle Size	519
Max Flow Rate	1.7L/Min
Max Pressure	20MPA
Model	SF -G20
Motor Type	DC Permanent Magnet
Dimensions	14.5KGS/19KGS
Max Flow Rate	46X43X49.5CM



USHER IN A NEW ERA OF MECHANIZED CONSTRUCTION

01

Mechanical Pressure Regulation

Adopts mechanical pressure regulation for a stable pressure system with very low failure rates.

02

Classic Model

Compact size, high power, easy to move and carry, durable, and long-lasting.

03

Painted Body

The entire body uses a paint baking process, giving it a beautiful appearance and a longer service life

04

Durable Materials

Features a permanent magnet DC motor, imported stainless steel pump body, and more durable polymer seals.

05

Anti-slip Handle

Equipped with an ergonomically designed anti-slip handle for easier and more comfortable use.

ELECTRIC AIRLESS PAINT SPRAYER

SF-450

PISTON PUMP

• Easy Pressure Control

Classic manual voltage adjustment knob, more convenient to adjustment

• Portable and light weight

With anti-slip handle design, easy to take and easy to store

• Durable Piston Pump

Wear-resistant piston pump reduces maintenance costs.



SF-3900



ITEM NO.	SF450
Power	1500W
Power requirement	220 - 240V/50HZ
Max.Pressure	230Bar(3300Psi)
Rate of Flow	2.3L/min
Max.tip	0.023in.
Weight	19KG
DxWxH (cm)	51x42x50(cm)
Support comes with	one gun 1.5M 1/4" high pressure hose one tip and tip guard 50 cm Extension pole

SF3900	
Power	1100W
Power requirement	220-240V/50HZ
Max.Pressure	200Bar(2900Psi)
Rate of Flow	2L/min
Max.Tip	0.021inch
Weight	21kg
DxWxH (cm)	52*44*48CM

ELECTRIC AIRLESS PAINT SPRAYER

SF-395

PISTON PUMP

Suitable for spraying walls and metal surfaces, varnishes, emulsions, paints, stains, etc.



- Small size,high pressure easy to carry and transport

- SF280E with LCD screen electronic pressure regulation more stable

- Chrome-Plated Frame Lightweight and convenient



SF-280E



ITEM NO.	SF395	SF280E
Power	1100W	1500W
Power requirement	220 - 240V/50HZ	220 - 240V/50HZ
Max.Pressure	200Bar(2900Psi)	230Bar(3300Psi)
Rate of Flow	2.0L/min	2.5L/min
Max.tip	619	0.025in.
Weight	21KG	20KG
DxWxH (cm)	46x43x49.5(cm)	52x44x48(cm)
Support comes with	one gun one tip and tip guard	1.5M 1/4" high pressure hose 50 cm Extension pole

ELECTRIC AIRLESS PAINT SPRAYER

PISTON PUMP



SF-2200

Classic Manual regulator system

- The sealing ring is made of high-quality cowhide, which is wear-resistant and not easily damaged.
- The entire pump can be easily unloaded and installed.
- The material suction valve can be removed with a hammer, making it easy to clean stains.

SF-2200B

Intelligent Pressure control system

- Advanced microprocessor control device ensures a stable and long-lasting spray pattern at any spraying pressure.
- With no pressure loss during low-pressure spraying.



SF-2200L

Classic Manual regulator system

- Puncture-resistant tires, easy to move
- Stainless Steel Frame with Extendable Handle



SF-2200BL

Intelligent Pressure control system

- Low noise design, make job easier.
- Longer piston pump, improve spraying efficiency

ITEM NO.	SF2200	SF2200L	SF2200B	SF2200BL
Power	1300 W	1300 W	1500 W	1500 W
Power requirement	220 - 240 V / 50 HZ	220 - 240 V / 50 HZ	220 - 240 V / 50 HZ	220 - 240 V / 50 HZ
Max.Pressure	200 Bar (2900 Psi)	200 Bar (2900 Psi)	200 Bar (2900 Psi)	200 Bar (2900 Psi)
Rate of Flow	2.51L /min	2.51L /min	2.8L /min	2.8L /min
Max.tip	0.023 in.	0.023 in.	0.025 in.	0.025 in.
Weight	25 KGs	28 KGs	23 KGs	30 KGs
DxWxH (cm)	52 x 44 x 48cm	49 x 48 x 80cm	52 x 44 x 48cm	49 x 48 x 80cm
Support comes with		one gun one tip and tip guard	1.5M 1/4" high pressure hose 50 cm Extension pole	

Electric airless paint sprayer

Brushless motor

An electric brushless sprayer is a spraying device driven by a brushless motor, widely used in painting operations in industries such as construction, automotive, and furniture. Compared to traditional brushed motor sprayers, brushless motor sprayers offer longer service life, higher efficiency, and lower maintenance requirements.

Precise Control

Uniform Coating:

The stability of the brushless motor ensures uniform coating.

Adjustability:

Precisely adjustable spraying speed and flow rate accommodate different coatings and working conditions.



Intelligent Control System

- Built-in data logging function stores critical data during the spraying process for analysis and optimization.



Brushless Motor

- Higher energy conversion efficiency reduces power consumption.
- No need to replace brushes, reducing maintenance workload.



Wear-resistant Pump Body

- Designed to be corrosion-resistant, suitable for various chemically aggressive coatings.
- Provides stable flow and pressure output, ensuring uniform spraying.



High pressure hose

- Thickened PVC rubber to meet different needs.
- Made with high-quality inner and outer layers, offering excellent abrasion and weather resistance, suitable for harsh working environments.



Efficient Heat Dissipation

- Utilizes advanced cooling design for quick and efficient heat dissipation, preventing overheating.
- Efficient cooling system allows the device to maintain stable performance under prolonged high-load operation.



High-quality Spray Gun

- The spray gun is finely designed to provide precise spraying results, suitable for various complex painting tasks.

SF-595



SF-695



SF-795



SF-895



Optional Hopper Available

Model	SF595	SF695	SF795	SF895
Power	2200W	2200W	3000 W	3500 W
Voltage	220-240V/50HZ	220-240V/50HZ	220 - 240 V / 50 HZ	220 - 240 V / 50 HZ
Maximum pressure	230Bar	230Bar	250Bar	250Bar
Flow rate	2.5L/min	3.0L/min	3.5L /min	5L /min
Maximum nozzle	0.021inch	0.023inch	0.025 in.	0.03 in.
Weight	21.60kg	22.00kg	23 KGS	25 KGS
Size	46 x 43 x 49.5cm	46 x 43 x 49.5cm	46 x 43 x 49.5cm	52 x 44 x 51cm
Included accessories	Spray Gun X1 Nozzle & Guard X1 and 15m High Pressure Hose 1/4 X1, 50cm Extension Rod X1			

SF995 is ideally for residential ,property maintenance and commercial applications. It can support with 2 guns!

With the 6-liter hopper
Save paint and reduce waste!



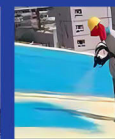
TECH DATA

Model	SF995
Power	3800W
Power requirement	220-240V/50HZ
Max.Pressure	250Bar
Rate of Flow	5.5L/min
Max.Tip	0.033inch
Weight	30kg
DxWxH (cm)	47.5*41.5*61CM

ALL KINDS OF WORK ONE MACHINE TO COMPLETE

Wide Applicability:
Suitable for various coatings, including water-based paints, oil-based paints, varnishes, etc.

Application Areas:
Suitable for home renovation, industrial coating, automotive painting, and more.



Electric Airless paint sprayer

Brushless motor



1795 HORIZONTAL



1795 VERTICAL

- Equipped with a permanent magnet brushless motor for enhanced durability.
- Intelligent microcomputer-controlled electronic display for greater precision and stability.
- The latest speed control button allows real-time flow adjustment to prevent material waste.

TECH DATA		
Model	SF1795 Horizontal	SF1795 Vertical
Power	4000W	4000W
Power requirement	220-240V/50HZ	220-240V/50HZ
Max.Pressure	230Bar(3300Psi)	230Bar(3300Psi)
Rate of Flow	5.5L/min	5.5L/min
Max.Tip	0.033inch	0.033inch
Weight	55kg	60kg
DxWxH(cm)	50*55*70CM	61*78*95CM



SF-1895



SF-1895 (HD PUMP)

TECH DATA		
Model	SF1895	SF1895 HD
Power	4500W	4500W
Power requirement	220-240V/50HZ	220-240V/50HZ
Max.Pressure	230Bar(3300Psi)	230Bar(3300Psi)
Rate of Flow	7.3L/min	7.6L/min
Max.Tip	0.043inch	0.043inch
Gross Weight / Net Weight	75/42kg	78/45kg
DxWxH(cm)	61*78*95CM	61*78*95CM

HIGH-PRESSURE BRUSHLESS MOTOR

· 24-hour continuous operation, high-quality craftsmanship, and versatile applications.

· Permanent magnet brushless motor with a rapid cooling system to extend motor service life. Efficiency is increased by 30%



EQUIPPED WITH A PERMANENT
MAGNET BRUSHLESS MOTOR

The new brushless motor facilitates cooling and extends motor service life.



SPECIAL SUBMERGED SUCTION
VALVE

Easier material suction and more hassle-free operation.

Electric Airless paint sprayer Brushless



SF-9527



SF-9528-X



SF-3695

TECH DATA		
Model	9527	9528-X
Power	5000W	5000W
Power requirement	220-240V/50HZ	220-240V/50HZ
Max.Pressure	230Bar(3300Psi)	230Bar(3300Psi)
Rate of Flow	8.50L/min	10.5L/min
Max.Tip	0.045inch	0.049inch
Weight	80kg	83kg
DxWxH(cm)	68*65*70CM	68*65*89CM

TECH DATA	
Model	SF3695
Power	4000W
Power requirement	220-240V/50HZ
Max.Pressure	230Bar(3300Psi)
Rate of Flow	7.3L/min
Max.Tip	0.043inch
Weight	75kg
DxWxH(cm)	61*78*95CM

Diaphragm pump

Electric Airless paint sprayer

THE DIAPHRAGM PUMP SPRAYING MACHINE IS A HIGH-EFFICIENCY DEVICE THAT UTILIZES DIAPHRAGM PUMP TECHNOLOGY FOR COATING APPLICATIONS

HIGH DURABILITY

Made of high-quality materials, offering good wear resistance and corrosion resistance, ensuring long-term use of the equipment.

EFFICIENT SPRAYING

The machine achieves stable high-pressure paint spraying through the diaphragm pump, ensuring an even coating.

EASY OPERATION

Simple and intuitive design, easy to operate and maintain, suitable for various usage environments.

SF-9901



SF-9902



SF-999



FACTORY
DIRECT SALES



WEAR RESISTANT
PUMP BODY



SUPPORT
CUSTOMIZATION



DURABLE
LONG-LASTING



REAL
MATERIALS

THE FULLY ENCLOSED MOTOR KEEPS INTERNAL
COMPONENTS PROTECTED FROM DIRT AND DUST DURING OPERATION

FAST AND SMOOTH COMMUTATION
SMALLER SPRAY AMPLITUDE FLUCTUATION, LONG SERVICE LIFE

ITEM NO.	SF999	SF9901	SF9902
Power	1600 W	4000 W	4000 W
Voltage / Frequency	220 - 240 V / 50 HZ	220 - 240 V / 50 HZ	220 - 240 V / 50 HZ
Max. Pressure	220 Bar (3300 Psi)	220 Bar (3300 Psi)	220 Bar (3300 Psi)
Rate of Flow	4.5L /min	4L /min	4.5L /min
Max. tip	0.0527 in.	0.0525 in.	0.0527 in.
Weight	20KGS	38 KGS	40 KGS
DxWxH (cm)	55 x 37x 42cm	66 x 52 x 56cm	67 x 53 x 58cm

PNEUMATIC PAINT SPRAYER

Piston pump pneumatic paint sprayer



SF-6528K

SF-9C

SF-6C

- Compressed air is used for the actuation, which is stable and reliable, with extremely low failure rate, small pressure pulse, uniform coating and better coating quality. One device can use multiple spray guns for simultaneous construction.
- It adopts mechanical air reversing, no open flame, no heat, no safety hazard. It adopts new type of silencer to make the working environment quieter.
- During the spraying process, the spray gun stops working and the spray machine stops automatically, which greatly increases the service life of the machine.

Tech Data	Model	SF6C	SF9C	SF6528
	Pressure Ratio	65:1	32:1	65:1
	No-load Displacement(L/min)	25	51	28
	Compress Air(MPa)	0.3~0.6	0.3~0.6	0.3~0.6
	Air Consumption(L/min)	300~1500	300~1500	300~1500
	Meas	50×54×74	50×54×92	50×54×96
Materials	N.W./G.W.	46/68	58/80	61/83
	Specially for the coating of inorganic zinc and zinc rich epoxy coating, and the third series products developed by our company, suitable for various inorganic zinc and zinc rich epoxy coating of thick film, and also suitable for various steel automatic shot painting stream line, inorganic zinc and zinc rich epoxy primer.			
Applications	Steel structures; Boats and ships; Automobiles; Trailers; Floor on ground; Railway vehicles Geology industry; Aerospace and aviation industry; Other industrial sectors			

PNEUMATIC PAINT SPRAYER

- The piston pump provides powerful paint delivery pressure, easily handling high-viscosity paints such as anti-corrosion coatings and epoxy resins.
- The pneumatic system finely atomizes the paint, ensuring uniform coverage on the sprayed surface, consistent coating thickness, and reduced waste.

SF-2539



SF-2549







SF-2569



SF-1437



Model	SF2539	SF2549	SF2569	SF1437
Pressureexchanging rate	39:1	49:1	69:1	37:1
No-loaddisplacement (L/min)	35	33	30	15
Compress air(MPa)	0.3-0.6	0.3-0.6	0.3-0.6	0.3-0.6
Air consumption(L/min)	100-1000	100-1000	100-1000	300-800
Weight of the wholemachine (kg)	70	65	60	30
Diameter of cylinder (mm)	Φ250	Φ250	Φ250	Φ140
D×W×H(mm)	520×580×960	520×580×960	520×580×960	480×480×800

Item No.	SF451	SF631	SF681	SF801
Output Per Cycle	250CC	220CC	180CC	145CC
Air Motor Size	10Inches(254mm)	10Inches(254mm)	10Inches(254mm)	10Inches(254mm)
Stroke Length	120mm	120mm	120mm	120mm
Fluid Pressure Ratio	45:1	63:1	68:1	80:1
Max. Flow Rate	15L/min	15.6L/min	14.5L/min	13.5L/min
Max. Pump Speed	60cycles/min	60cycles/min	60cycles/min	60cycles/min
Maximum Air Pressure	7bar(100psi)	7bar(100psi)	7bar(100psi)	7bar(100psi)
Max. Working Pressure	315bar(4568psi)	441bar(6395psi)	476bar(6902psi)	560bar(8120psi)
Max. Tip Size	variable	variable	variable	variable
Air Inlet Size	3/4" PT	3/4" PT	3/4" PT	3/4" PT
Fluid Inlet Size	1" PT	1" PT	1" PT	1" PT
Fluid Outlet Size	3/8"NPSM	3/8"NPSM	3/8"NPSM	3/8"NPSM
Net/Gross Weight	123/138kgs	123/138kgs	120/135kgs	117/132kgs
Package	polywood case(76*72*140cm)	polywood case(76*72*140cm)	polywood case(76*72*140cm)	polywood case(76*72*140cm)
20FT/40HQ Loading Qty	24/48SETS	24/48SETS	24/48SETS	24/48SETS
Typical Applications:	steel structures and parts, fire protection spraying, protection of wooden structures in construction, rehabilitation of concrete structures, waterproofing			
Compatible Materials:	primers, fillers, polyurethanes 1K, 2K, alkyds, epoxies 1K, 2K, waterborne paints, fire retardants, waterproofing materials, bitumens			
Photo				
Contents in Package	1. Airless Paint Sprayer, 1 set 2. XTR 7 Airless Spray Gun(with 2pcs XHD spray tip 517+521 and 1pc XHD tip guard), 1pc 3. 3/8"NPSM x 15M 2-layer wire-braided High Pressure Hose, 1pc 4. 1/4"NPSM*2m 2-layer wire-braided Whip Hose, 1pc 5. 3/8"*1/4"NPSM Hose Connector, 1pc 6. Suction Hose Assembly, 1 set 7. Tool Set, 1set 8. Manual, 1pc	1. Airless Paint Sprayer, 1 set 2. XTR 7 Airless Spray Gun(with 2pcs XHD spray tip 517+521 and 1pc XHD tip guard), 1pc 3. 3/8"NPSM x 15M 2-layer wire-braided High Pressure Hose, 1pc 4. 1/4"NPSM*2m 2-layer wire-braided Whip Hose, 1pc 5. 3/8"*1/4"NPSM Hose Connector, 1pc 6. Suction Hose Assembly, 1 set 7. Tool Set, 1set 8. Manual, 1pc	1. Airless Paint Sprayer, 1 set 2. XTR 7 Airless Spray Gun(with 2pcs XHD spray tip 517+521 and 1pc XHD tip guard), 1pc 3. 3/8"NPSM x 15M 2-layer wire-braided High Pressure Hose, 1pc 4. 1/4"NPSM*2m 2-layer wire-braided Whip Hose, 1pc 5. 3/8"*1/4"NPSM Hose Connector, 1pc 6. Suction Hose Assembly, 1 set 7. Tool Set, 1set 8. Manual, 1pc	1. Airless Paint Sprayer, 1 set 2. XTR 7 Airless Spray Gun(with 2pcs XHD spray tip 517+521 and 1pc XHD tip guard), 1pc 3. 3/8"NPSM x 15M 2-layer wire-braided High Pressure Hose, 1pc 4. 1/4"NPSM*2m 2-layer wire-braided Whip Hose, 1pc 5. 3/8"*1/4"NPSM Hose Connector, 1pc 6. Suction Hose Assembly, 1 set 7. Tool Set, 1set 8. Manual, 1pc

AIR POWERED PAINT EQUIPMENT AND TOOLS

SF-3 Internal Pipe Sprayer

Features:

- Can be used with pneumatic sprayers
- The diameter of the pipe that can be sprayed is 30-120 cm



AIR POWERED PAINT EQUIPMENT AND TOOLS

Pneumatic Mixer



SAFE AND RELIABLE

SINCE COMPRESSED AIR IS USED AS THE POWER SOURCE, THERE IS NO NEED FOR ELECTRICITY, REDUCING THE RISK OF ELECTRICAL SPARKS AND EXPLOSIONS, MAKING IT PARTICULARLY SUITABLE FOR USE IN ENVIRONMENTS WITH HIGH EXPLOSION-PROOF REQUIREMENTS.

- 80L stainless steel mixing tank
- Agitator is designed for mixing adhesive coatings
- Stable base design with wheels makes transportation easier
- Without using electricity, the pneumatic mixer offers higher safety in harsh environments such as high temperature and high humidity.

The pneumatic mixer is a mixing device that uses compressed air as a power source, widely used in industries such as chemical processing, paint production, and food processing. It operates by driving the mixing blades with a pneumatic motor to achieve uniform mixing of liquids or slurries. The pneumatic mixer is widely recognized in various application scenarios for its high efficiency, operational safety, and strong adaptability.

AIR-POWERED PAINT EQUIPMENT & TOOLS

SUITABLE FOR SPRAYING INDOOR AND OUTDOOR GENERAL PAINTS, PUTTY, PLASTER, MORTAR, CEMENT, ETC. (NOT SUITABLE FOR SPRAYING PAINT).

Mortar spray gun

(Air Compressor needed)

Max. Output Pressure: 30Mpa
 Max. Spray Flow: 25L/min
 Max. Particle Size: 6mm
 Optimal Spray Distance: 30cm
 Spray Width: 60cm
 Weight: 3.5kg
 Dimensions: 25x65x35cm



Texture Sprayer

(Air Compressor needed)

- Specially designed for texture paint, it can easily handle high viscosity and granular coatings, ensuring uniform spraying without clogging.
- Requires a high-performance air compressor to provide powerful and stable air support, ensuring uniformity and precision in the spraying effect.

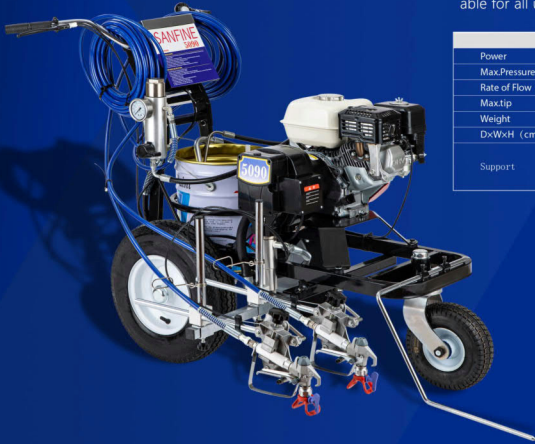


ITEM NO.	SF60L/80L/100L
DELIVERY	8 - 10 kg/min
TIP SIZE	4, 6, 8 mm
WEIGHT	38 KGS
AIR COMPRESSOR	YES
MEAS	47 x 44 x 92cm

SF-5090 COLD SPRAY ROAD LINE MACHINE

A high-performance line marking machine with dual guns (single gun optional), capable of producing precise and consistent road lines during construction. Powered by a gasoline engine, it is ideal for large outdoor areas and is the top choice for professional contractors for marking materials.

- FEATURES:**
- Honda power unit, reliable performance, easy to start.
 - Simple and intuitive speed control system, convenient on/off gun operation.
 - Perfect spray gun setup, suitable for all users.



TECH DATA	
Power	5.5HP
Max.Pressure	250Bar
Rate of Flow	4.0L/min
Max.tip	0.035Inch(One gun)
Weight	98 KG
DxWxH (cm)	112x74x87(cm)
Support	1 gun .057" 2 guns .019"

BATTERY-POWERED ROAD MARKING MACHINE

SF-ES1000(60V-37A)

BATTERY POWER

- ALL-COPPER MOTOR MORE POWERFUL
CAN WORK CONTINUOUSLY FOR UP TO 6 HOURS
- CAN MARK LINES OF ANY WIDTH FROM 5CM TO 45CM, WITHOUT BURRS, AND THE LINE TYPE MEETS ALL ACCEPTANCE STANDARDS
- MICROCOMPUTER CONTROLLER, ACCURATE DIGITAL DISPLAY OF WORKING PRESSURE



SF-ES1000(72V-20A)



- 1.NO PULSE
- 2.NO NOISE
- 3.SMALL AND LIGHT

TECH DATA		
Item No.	ES1000 (60V)	ES1000 (72V)
Battery:	60V-37A	72V-20A
Rate of Flow	2.5L/MIN	2.5L/MIN
Max. Tip size	0.025in	0.025in
Weight	112KGS	112KGS
D×W×H (cm)	102*76*86 CM	102*76*86 CM

GASOLINE-POWERED ROAD MARKING MACHINE

SF-GX850(piston pump)

GASOLINE POWER

- Small body and great convenience
It can cope with various small venues Save more effort and improve work efficiency
- Small and light, it can easily cope with various scenes
- Original high-quality Honda engine with stable performance and strong power



SF-999L (Diaphragm pump)



HIGH PRESSURE HOSE:
Thickened PVC rubber to meet different needs

VACUUM WHEEL:
Abrasion-resistant, shock-absorbing, suitable for all road conditions

TECH DATA		
Model	SFGX850	SF999L
Power	1Kw/7000rpm	6.5HP
Engine Type	Honda OHC	Honda OHC
Max. Pressure	227Bar	220Bar (3300Psi)
Rate of Flow	1.9L/min	4.5L/min
Max. Tip	0.019inch	0.0527inch
Weight	59.50kg	98.50kg
D×W×H (cm)	117*58*77CM	117*58*77CM

COLD SPRAY ROAD MARKING MACHINE

HEAVY-DUTY HYDRAULIC PUMP

- Support with 2 guns,improve working efficiency
- With Honda GX200 engine,offering superior performance
- Overflow regulation system design reduce spraying pulse

SF-400HS



SF-600HS

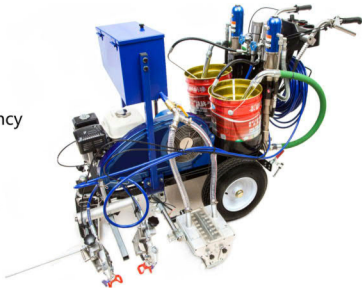
TWO-COMPONENT HYDRAULIC PUMP

DOUBLE HYDRAULIC PUMP

Two-component hydraulic pump meets more marking needs and doubles efficiency

GLASS BEAD SPREADING SYSTEM

Adjustable flow rate spreading system to improve line marking quality



TECH DATA	
Max. W. Pressure	SF-400HS/20Mpa
Max.Flow rate	10L/min
Power	(6.5HP) Honda GX200
Max. tip size	0.046in(1 guns) 0.033in(2 guns)
Max. Wide	5-50 cm
Weight	125KGS
Meas	165.1×81.3×101.6 cm

TECH DATA	
Item No	SF-600HS
Power	6.5HP
Pressure	230 bar
Rate of Flow	15 L/MIN
Max. Tip size	0.039in(one gun) 0.031in (two guns)
Glass Bead storage box	20KG/BOX
Weight	180KGS
D×W×H (cm)	180*82*115 CM

THERMOPLASTIC ROAD MARKING MACHINE

THERMOPLASTIC HAND-PUSH DOUBLE-DISPENSING ROAD MARKING MACHINE

Item NO	SF-HX6500
Warranty	1 Year
UNIQUE SELLING POINT	Low Maintenance Cost
Condition	New
Brand Name	Sanfine
Product Name	Road marking machine
Usage	Thermoplastic Paint Road Line
Power	5.5HP
Coat Thickness	1.5-4mm
Weight	115 KGS
Dimension	120×90×95 CM
After Warranty Service	Online support
Local Service Location	None
After-sales Service Provided	Online support
Glass Bead Storage Tank	16kg/box

01.TIRE

Wear-resistant, heat-resistant shock-absorbing, long-lasting Suitable for most road conditions

02.INDEPENDENT POSITIONING SCALE

The independent positioning pointer makes line marking more precise and improves marking efficiency

03.STAINLESS STEEL FRAME

Sturdy and durable corrosion-resistant and long service life

04.INSULATED TANK

Double-layer stainless steel insulated heating tank with a double-layer stainless steel bottom, capacity of 100kg



Double your work efficiency
Add a power assist vehicle for unparalleled performance



ROAD LINE BOOSTER

Two power options for customers to choose

- **Comfortable seats**
Leather surface is resistant to abrasion and dirt
- **Stainless Vehicle frame**
The stainless steel body is wear-resistant and rust-proof, making it ideal for outdoor work
- **High quality vacuum tire**
High-quality vacuum tires improve driving comfort and smooth operation improves line marking quality



Model Number	Line Driver
Brand Name	SANFINE
Working speed	Maximum: 10mph (16km/h)
Reverse speed	6mph (10km/h)
Power	cc (Hp): 200 (6.5)
Starting system	gasoline-powered traction/ProStar system
Dimensions	150*80*100cm
Weight	130k'g

SFV-01 Honda Gasoline Version



SFV-02 Battery-powered Electric Version



ROAD LINE REMOVER



SF-270 HYDRAULIC LINE REMOVER

- wear-resistant alloy blade
36 wide blades for higher line removal efficiency and more thorough cleaning!
- No need to push, with hydraulic self-propelled system, can forward and backward
- Cutting depth are adjustable from 3mm depth
- Oil filter is 10 times more durable than regular air filters
- Clears 30-50 meters per minute with fewer particles and less road damage



SF-270 Road Marking Remover is professional equipment applicable to remove the original old road lines for the purpose of repairing and renewing the thermoplastic marking line. The machine has the features of strong power, high speed, easy and safe operation, low vibration and noise.

HEAVY DUTY HYDRAULIC PUMP AIRLESS PAINT SPRAYER

STABLE PERFORMANCE DURING SPRAYING, CAPABLE OF SPRAYING HEAVY PUTTY AND HIGH-VISCOSITY MATERIALS (SUCH AS ASPHALT PAINT AND PUTTY USED ON LARGE CONSTRUCTION SITES). IT HAS STRONG POWER AND CAN BE CONNECTED TO LONG HIGH-PRESSURE HOSES, WITH A MAXIMUM LENGTH OF UP TO 200 METERS IN ACTUAL WORK.



SF980 Subaru Diesel Engine

SF980 PUTTY SPRAYER MODELS

SF980 PUTTY SPRAYER MODELS

- Designed for high-viscosity materials, supporting multiple guns (up to 4) simultaneously, making it an ideal choice for high-altitude operations.
- Powerful high-performance pump: supports sensitive operation during spraying with a low failure rate.
- The air tank and piston rod surfaces are coated with a wear-resistant layer, ensuring durability and essential conditions for large-scale construction.
- Optimal performance: Output rate of 13.5L/min.
- Product features: The pump body is designed to rotate for easy material barrel replacement, and the foldable trolley design allows for convenient transportation.

TECH DATA					
Model	Power	Max.Pressure	Rate of Flow	Weight	DxWxH (cm)
SF980 Subaru diesel	13HP	3600PSI (250BAR)	15L/MIN	98KG	121x80x115(cm)
SF980 Honda gasoline	9HP	3600PSI (250BAR)	13.5L/MIN	95KG	121x80x115(cm)
SF980 E Electric	5500W 380V	3600PSI (250BAR)	13.5L/MIN	90KG	121x80x115(cm)
SF980 E Electric	5000W 220V	3600PSI (250BAR)	10.33L/MIN	88KG	121x80x115(cm)
Application	Large residential, commercial and industrial buildings, corrosion/ fire - proof /water - proof materials				

SF980 Honda Gasoline



SF980 220V



SF980 380V



PUTTY SPRAYER MODELS

SF-A6L HONDA GASOLINE POWER

· **High-efficiency hydraulic motor**
Stable and reliable performance
Long service life, low maintenance cost

· **Cooling System**
Large capacity cooling system, innovative design of heat sink, enhance the wear resistance of pump body

· **Good spraying effect**
Can be sprayed with high viscosity material like putty and fireproof materials

SF-Q6



SF-A6L



TECH DATA	
Model	SF-A6L
Power	6.5HP
Engine Type	Honda Gasoline
Max. Pressure	227Bar
Rate of Flow	12L/min
Max. Tip	0.055inch
Spray Distance	600-800mm
Weight (N, W/G, W)	68/73kg
D×W×H (cm)	101×80×115CM

PUTTY SPRAYER MODELS

SF-Q6 ELECTRIC MODEL

The electric model is suitable for high viscosity materials and supports multi gun(4 guns), ideal for high altitude working condition

· **Powerful motor**
With powerful 5000W electric motor
220V/380V are available for chose

· **Quick-change**
Quick-change pump design, stainless steel frame, convenient to deliver

SF-Q6 380V



SF-Q6 220V



· **Application:**
Indoor and outdoor coating, putty spraying
heavy anti-corrosion paint, waterproof foreproof coatings etc

TECH DATA					
Model	Power	Max. Pressure	Rate of Flow	Weight	D×W×H (cm)
SF-Q6 Honda gasoline	9HP	3600PSI (250BAR)	13.5L/MIN	95KG	121×80×115(cm)
SF-Q6 Electric(380V)	5500W 380V	3600PSI (250BAR)	13.5L/MIN	90KG	121×80×115(cm)
SF-Q6 Electric(220V)	5000W 220V	3600PSI (250BAR)	10.33L/MIN	88KG	121×80×115(cm)
Application	Large residential, commercial and industrial buildings, corrosion/ fire - proof /water - proof materials				

HEAVY DUTY SPRAY EQUIPMENT

SF1033/A9 HEAVY DUTY SPRAY EQUIPMENT

Suitable for asphalt paint, fireproof materials, asphalt, epoxy zinc-rich coatings, putty powder, polyurethane paint, plaster, drywall mud, white cement, and other high solids content materials.

- Capable of supporting a single seal ring to spray 80,000 square meters of building area without replacement
- Durable pump body minimizes seal ring wear and is easy to disassemble.
- Large 15L hydraulic oil tank, no need for special hydraulic oil.

SF1033/A9 Subaru Diesel



SF1033/A9 Honda Gasoline



SF1033/A9 Electric Version



TECH DATA					
Model	Power	Max.Pressure	Rate of Flow	Weight	DxWxH (cm)
SF1033 Subaru diesel	15HP	4000PSI 280BAR	20L/MIN	175KG	124*82*143cm
SF1033 Honda gasoline	13HP	4000PSI 280BAR	15L/MIN	168KG	124*82*143cm
SF1033 Electric	7500W 380V	4000PSI 280BAR	15L/MIN	158KG	124*82*143cm
Application	Large residential, commercial and industrial buildings, corrosion/ fire-proof /water-proof materials				

HEAVY DUTY SPRAY EQUIPMENT

SFA8L HEAVY DUTY SPRAY EQUIPMENT

Ideal for high-viscosity materials and can support multiple guns (up to 6 guns) for high-altitude operations.

Cooling System:

A unique transmission system—automotive-grade belt drive—ensures a tight connection with the pulley, preventing loss of traction. The belt's tension automatically adjusts with power variations, derived from automotive technology.

Hydraulic Motor/Pump:

Proven through rigorous testing—stable and reliable, offering quick and smooth steering with minimal spray pattern fluctuations. No need for a restart function, and features 100% leak-proof O-ring seals.

SFA8L Subaru Diesel



SFA8L Honda Gasoline



SFA8L Electric version



TECH DATA	
ITEM NO	A8L
Power	14HP (Petrol engine)/9.5KW (Electric)
Rate of Flow	30L/min
Max. Pressure	4000PSI/280Bar
Weight	215KG
DxWxH (cm)	124x82x143cm

SCREW PUMP SPRAYER

SF-S3 Thick Fireproof paint sprayer

THE SCREW PUMP TECHNOLOGY CAN SMOOTHLY DELIVER HIGH-VISCOSITY PAINT WITHOUT GENERATING PULSATIONS, ENSURING UNIFORM SPRAYING WITHOUT INTERRUPTION. CAPABLE OF HANDLING VARIOUS TYPES OF COATINGS, INCLUDING WATERPROOF PAINTS, ANTI-CORROSION COATINGS, AND THICK LAYERS, SUITABLE FOR DIVERSE COATING REQUIREMENTS.



75L large capacity hopper
Easy to clean and convenient for adding and mixing materials

4000W all-copper motor
Provide reliable power and support
Large flow rate 35 liters per minute

TECH DATA	
Item No	SF-S3
Power	4000 W
Power Requirement	380V/50HZ
Pressure	40 bar
Rate of Flow	3-35 L/MIN
Max aggregate size	6 mm
Delivery Height	20M
Delivery Distance	60M
Hopper Volume	75L
Weight	140KGS
D×W×H (cm)	91×60×119 CM

SCREW PUMP SPRAYER

Waterproof paint spray machine

• Equip with Air-compressor

T21 is equipped with 1350W air compressor
T22 is equipped with 2700W air compressor

• Thickened Corrosion-Resistant Hopper

With Mixer inside
Mixing speed can be adjusted

• Powerful Motor

4-pole conveyor motor, pure copper wire conveyor motor with adjustable speed function for more convenient use

• High power air compressor

• High wear-resistant tire

• Adjustable speed of mixing and spraying

TECH DATA		
Model	T-21	T-22
Power requirement	220-240V/50HZ	220-240V/50HZ
Air compressor Power	1350W	2700W
Mixing power	1500W	1600W
Rate of Flow	15L/min	15L/min
Delivery distance	30M	30M
Delivery height	20M	20M
Hopper capacity	40L	40L
Weight	60KG	60KG
D×W×H (cm)	76×55×96CM	76×55×96CM

SF-T21



SF-T22



SCREW PUMP SPRAYER

TEXTURE SPRAYER

- 2800W Brushless DC Motor
Provide reliable power output
Large flow rate of 15 liters per minute



Low noise



Low wear



Long life

- Large hopper 50L
- Ideal for heavy materials
(Texture, fibered, aggregate and water-based materials)
- Suitable for high altitude work
(60M spraying in distance)
(30M spraying in height)
- Powerful screw pump

SF-10 (Air compressor needed)



SF-10 Max (with air compressor)



TECH DATA		
Model	SF10	SF10MAX
Power requirement	220-240V/50HZ	220-240V/50HZ
Power	2800W	2800W
Air compressor Power	NA	3600W
Rate of Flow	15.0L/min	15.0L/min
Max Pressure	30bar	30bar
Delivery distance	60m	60m
Delivery height	30m	30m
Maximum particle size	4mm	4mm
Hopper capacity	50L	50L
Weight	58.00kg	80.00kg
D×W×H (cm)	113×46×55 CM	120×50×75 CM

SCREW PUMP SPRAYER

TEXTURE SPRAYER

SF-7L supports 2 guns Can spray
1500 square meters in 8 hours

1. High-quality motor, powerful performance
2. Pressure-resistant spray hose, lightweight and wear-resistant
3. High-pressure air pump, more powerful spraying
4. Reinforced body, more durable
5. Rapid cooling system, ensures long-lasting operation
6. speed adjustable freely control the speed

SF-7L



TEXTURE SPRAYER

Suitable for real stone paint, fireproof coatings, crack-resistant mortar, topcoat plaster, exterior wall putty, and more.



TECH DATA	
Item No	SF7L
Power	3500 W
Power Requirement	220V/50HZ
Pressure	40 bar
Rate of Flow	30 L/MIN
Delivery Height	30M
Delivery Distance	55M
Hopper Volume	80L
Weight	40KGS
D×W×H (cm)	96×50×65 CM

SF-X35



TECH DATA	
Model	SF-X35
Electric Power	5000W
Rate of Flow	35L/min
Hopper Capacity	60L
Conveying Pressure	40Bar
Conveying Distance	60m
Weight	75KG
D×W×H (cm)	130×63×64 (cm)

SCREW PUMP SPRAYER

PLASTER CEMENT MOTOR SPRAYER

- The pneumatic switch on the spray gun enables remote control of the machine's automatic start and stop, preventing gun clogs and pipe bursts.
- Integrated control box. The optimized control system allows for quick adjustment of flow rate, significantly saving materials.

- Advantages
- Water/Material modular design structure
 - Germany Motor and Air compressor
 - Automatic water supply pump
 - Durable Electric Engine

TECH DATA	
Model	SF-M6
Electric Power	380V/50HZ
Rate of Flow	30L/min
Pressure	50bar
Motor Power	5.5KW
Air compressor power	3KW
Delivery Distance	40m
Delivery Height	20m
Tip Size	5mm
Hopper Volume	115L
Filling Height	900mm
Weight	220KG
D×W×H (cm)	123x72x155cm
Application	Cement, Mortar, Exterior wall coating Etc.

TECH DATA	
Model	SF-M5
Voltage	380V/4000W
Max. working pressure	50bar
Max. delivery rate	40 L/min
Vertical conveying distance	50m
Horizontal conveying distance	80m
Maximum particle size	6mm
Hopper capacity	150L
Weight	120KG
Meas	140*60*85cm
Application	gypsum, mortar, cement, waterproof coating

SF-M5



SF-M6



SCREW PUMP SPRAYER

PLASTER CEMENT MOTOR SPRAYER

Applicable materials:
Mixing mortar, stucco mortar, reinforcement mortar, cement interface agent, clay, and renovation mortar.
Insulation mortar, etc.

- Integrated multifunctional mixer
- Large hopper capacity
- 50L/min large flow rate
- Powerful, high efficiency
- Imported screw and rubber sleeve solid quality

The conveyor pump has a high output capacity and long conveying distance, reaching up to 100 meters horizontally and 50 meters vertically.

TECH DATA	
Item	SF-S6
Voltage	380V
Driving power	7500W
Mixing power	2200W
Flow	50L/min
Pressure	40Bar
Delivery distance	100m
Delivery height	50m
Maximum particle size	8mm
Pumping hopper capacity	150L
Mixer hopper capacity	170L
Feeding method	Mixer support
Weight	278kg

SF-S6

Mechanical Speed Control Motor



SF-S6S

Variable Frequency Speed Control Motor



SCREW PUMP SPRAYER

PLASTER CEMENT MOTOR SPRAYER

Integrated control box

- Adjustable flow rate
- Large capacity hopper
- Easy to operate and clean

Solid tires are wear-resistant and have strong load-bearing capacity



Item	SF3XL
Voltage	400V
Driving power	5500W
Mixing power	2200W
Flow	10-40L/min(Adjustable)
Pressure	40Bar
Delivery distance	80m
Delivery height	60m
Maximum particle size	8mm
Pumping hopper capacity	130L
Mixer hopper capacity	150L
Feeding method	Mixer support
G.Weight	366kg

APPLICABLE TO

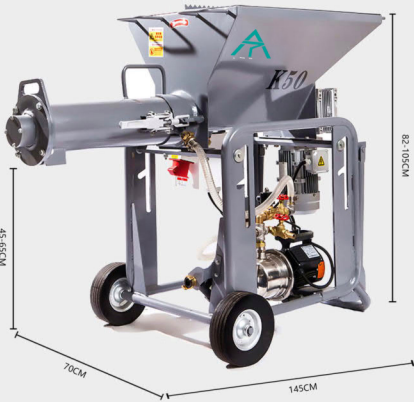
ON-SITE MIXING MORTAR, REINFORCEMENT MORTAR, CEMENT INTERFACE AGENTCLAY, RENOVATION MORTAR, MASONRY MORTAR/LIGHTWEIGHT MORTAR THERMAL INSULATION MORTAR, ANTI-CRACKING MORTAR, PUTTY, BUILDING GLUE ADHESIVE, FIREPROOF MORTAR, EPOXY COATING, REPAIR MORTAR, FLOORMORTAR, TILE AND CAULKING MORTAR, PRIMER CEMENT BASE ASH, LIME MORTAR RELIEF AND MODELING MORTAR, ANTI-CORROSION CHALK MATERIAL, ETC

TEXTURE PLASTER CEMENT MOTOR MIXER

MORTAR SPRAYING MACHINE PARTNER:

- Good match with Mortar sprayer
- 50L large flow, fast delivery
- Automatic water supply
- Automatic blender system
- One machine multipurpose
- Reduce stirring time
- Improve construction productivity

THE MACHINE BODY HEIGHT IS ADJUSTABLE



TECH DATA	
Model	K50
Electric Power	2200W/(380V/50HZ)
Rate of Flow	50L/min
Hopper Volume	100L
Filling Height	107 - 119 (cm)
Delivery Height	75 - 87 (cm)
Weight	66KG
DxWxH (cm)	150*62*107 (cm)

A SCREW PUMP MIXER IS A DEVICE THAT COMBINES THE FUNCTIONS OF A SCREW PUMP AND A MIXER, WIDELY USED IN INDUSTRIES SUCH AS CHEMICAL PROCESSING, FOOD PRODUCTION, PHARMACEUTICALS, AND CONSTRUCTION. IT IS DESIGNED TO HANDLE HIGH-VISCOSITY FLUIDS, SLURRIES, AND SOLID-LIQUID MIXTURES BY UTILIZING THE SCREW PUMP'S CONVEYING CAPABILITY AND THE MIXER'S BLENDING ACTION, ENSURING UNIFORM TRANSPORTATION AND THOROUGH MIXING OF MATERIALS.

OTHER HEAVY DUTY SPRAY EQUIPMENT

POLYURETHANE & POLYUREA COATING MACHINE

Equipment Applications:
SF-H3500 has a wide range of application. Equipment suitable for a variety of construction environment, can spray a variety of Two-component PU material Polyurea,elastomers,polyurethane,elastomers, foaming materials and polyurea waterproof, anti-corrosion materials etc.

TECH DATA	
ITEM NO.	SF-H3500
Material properties	1:1
Material viscosity range	200-1000cps
Output	2-8 kg/min
Boiling water	9000W/2
Pump installation heating power	Pump 5500W
Boiling temperature range	20℃-90℃
Power	380V 50HZ3 phase
Work Pressure	8-12Mpa
Output Pressure	20Mpa
Flow	1100-1600l/80m
Weight	250kg
Accessories	Backpack 1 pc Spray gun 1 pc Roller pressure hose 120M*1 pc Tool kit 1 pc Manual 1 pc Supply pump 1 pc Roller pump 120M*1 pc



GAS-POWERED PUTTY SPRAY MACHINE

HEAVY DUTY PISTON PUMP

High-precision chips
Intelligent pressure compensation

Import 304 stainless steel pump body
More wear-resistant Long service life

Chrome plated steel vertical trolley
Foldable handle that can be used as a hose holder when unfolded

High-performance engine
Equipped with original Honda engine
low noise, Efficient and continuous power supply



SF-8900



SF-8900 HD



SF-2030

ITEM NO.	SF8900 (Standard pump) Honda Petrol	SF8900HD (HD pump) Honda Petrol	SF2030 (Low-pressure gasoline)
Power	6.5HP	6.5HP	6.5HP
Max. Pressure	230Bar(3300Psi)	230Bar(3300Psi)	230Bar(3300Psi)
Rate of Flow	8.3L/min	9.3L/min	8.3L/min
Max. tip	0.048in.	0.051in.	0.048in.
Weight	66KG	73KG	70KG
D × W × H (cm)	80× 88× 104(cm)	80× 88× 104(cm)	80× 88× 104(cm)
Supports comes with	1 gun .048" 2 guns .035" 3 guns .027" 4 guns .021"	one gun one tip and tip guard 15M 3/8" high pressure spray hose 1.5M 1/4" high pressure whip hose 50 cm Extension pole	

MORTAR PUMP SPRAY MACHINE

HEAVY DUTY MORTAR PUMP SPRAY MACHINE

Features

- Easy to operate :Simple operation, can quickly start operation
- Connect with 220V electric current
- The running speed can be adjusted
- Remote control switch, easy to work
- Small in size and easy to transport.
- Durable and cost saving: Wear resistant piston pump, can spray corrosive mortar, quick disassembly design, effectively reduce maintenance time and cost.

TECH DATA	
Model	F350e
Voltage	220V
Max. working pressure	41bar (600psi, 4.18pa)
Max. spraying pressure	34 bar (500psi, 3.48pa)
Max. delivery rate	24 l/min (6.5gpm)
Max. hose length	30.5M
Hopper capacity	76L (20 gal)
Hopper Height	66cm (26in)
Hopper mass (W×H)	57x36cm
Weight	90kg
Meas	116x61x97cm
Air compressor Pressure	3.8Bar (55Psi)
Air compressor rate	5cfm



SF-F350E

PUTIAN MORTAR PUMP IS DESIGNED FOR ALL KINDS OF MORTAR SPRAYING, CAN SPRAY LOW, MEDIUM AND HIGH DENSITY MORTAR COATING, AND PROVIDE A STEADY FLOW. PUTIAN PISTON PUMPS DELIVER HIGH FLUID PRESSURE, DELIVER MATERIAL THROUGH LONG HOSES, AND ALLOW LONGER SPRAYING TIME ON THE JOB SITE AND LESS TIME TO MOVE EQUIPMENT.

MORTAR PUMP SPRAY MACHINE

HEAVY DUTY MORTAR PUMP SPRAY MACHINE

Features

- Large flow rate, 70L per minute
- Spray thick fire-resistant coatings with 2 guns
- 100 meters horizontal conveying distance 90 meters vertical conveying height
- Applicable for materials with particles smaller than 5mm
- Long service life sealing rings can spray more than 200 tons of materials



TECH DATA	
Model	F400e
Power	4000W
Voltage	250V 50HZ
Delivery Distance	50M
Max. Flow of Rate	60L/min
RPM	2500/min
Pump	Electric hydraulic pump
Meas	120x65x99cm
N. W/G. W	150/188 KGS

SF-F400E



SF-F450E



TECH DATA	
ITEM NO	F450E
Power	1. 7500W-380V 2. 13HP-GX390 (HONDA engine) 3. 15HP (SUBARU engine)
Max. W. Pressure	7 Mpa
Max. Flow rate	70L/min
Hopper trolley with Vibrating screen	80 x 55 x 85cm 40KG 80L
Weight	173 / 183 / 190 KGS
Meas	124 x 82 x143 cm

MORTAR PUMP SPRAY MACHINE

HEAVY DUTY MORTAR PUMP SPRAY MACHINE

F1017/F680:

This is pumping and spraying equipment used for self-leveling flooring and self-leveling cement.

Vibrating screens:

80L Trolley type extra large capacity vibrating screen
Convenient and quick operation

The most important feature is a special structure with high wear resistance, which places the mixing shaft technology at the forefront of international counterparts. It is built with a steel frame, making it highly durable.

SF-F1017



SF-F680



TECH DATA		
Model	F1017	F680
Power	380V-7500W	380V-7500W
	13HP-Honda GX390(Gasoline)	13HP-Honda GX390(Gasoline)
	15HP-Subaru engine(Diesel)	15HP-Subaru engine(Diesel)
Pressure	10 Mpa	10 Mpa
Rate of Flow	120L/min	80L/min
Hopper trolley with Vibrating screen	120L	120L
Weight	115*60*90CM	115*60*90CM
	243KG (Electric)	205KG (Electric)
	263KG (Gasoline)	225KG (Gasoline)
	271KG (Diesel)	232KG (Diesel)
D×W×H (cm)	124*82*143CM	124*82*143CM

HEAVY DUTY WATERPROOF SPRAY EQUIPMENT

PU WATERPROOF SPRAY MACHINE WITH HEATER

SF-G5/G6/G7:

Stable performance during spraying, capable of applying ultra-thick waterproof coatings and high-viscosity materials (such as asphalt paint, emulsified asphalt, and putty on large construction sites). Polyurethane waterproof coatings can be applied without adding thinners.

• Can connect to long high-pressure hoses (over 100 meters) and spray buildings over 15 stories high.

• Versatile, robust, meeting the demands of construction sites. It is the best choice for large-scale projects and spray-ing high-viscosity materials.

SF-G5



SF-G6



SF-G7



TECH DATA			
Model	G5	G6	G7
Power (Machine)	220V-5000W	380V-7500W	380V-7500W
	NA	13HP-Honda GX390(Gasoline)	13HP-Honda GX390(Gasoline)
Power(Heater)	220V-3500W	220V-3500W	220V-3500W
	NA	380V-5400W	380V-5400W
Pressure	50 Mpa	50 Mpa	50 Mpa
Rate of Flow	5.0L/min	6.5L/min	8.0L/min
Max.tip	0.027inch	0.035inch	0.039inch
Weight	135KG	155KG	165KG
D×W×H (cm)	120*80*115CM	120*80*115CM	120*80*115CM

HEAVY DUTY WATERPROOF SPRAY EQUIPMENT

SF-933

PU WATERPROOF SPRAY MACHINE WITH HEATER

SF-933/G9:

- Faster and more responsive switching
- Sealed O-ring to eliminate leaks
- High-precision pressure control
- No need for a hydraulic reset button
- Durable hydraulic lines
- Heavy-duty cooling system
- Heavy-duty hydraulic system
- Rugged and durable heavy-duty steel frame



SF-G9



Model	G9	933
Power (Machine)	380V-9000W	380v-9000W
	13HP-Honda GX390(Gasoline)	13HP-Honda GX390(Gasoline)
Power(Heater)	220V-3500W	NA
	380V-5400W	NA
Pressure	500 Bar	500Bar
Rate of Flow	15.0L/min	15.0L/min
Max.tip	0.065inch	0.065inch
Weight	260KG	240kg
D×W×H (cm)	124*82*143CM	124*82*143CM



NEW PRODUCTS WILL CONTINUE TO BE INTRODUCED.
THANK YOU FOR YOUR SUPPORT!

Taizhou Sanfine Tools Co., Ltd.

Add.: Xiayang Village, Sanmen, Taizhou City, Zhejiang,China

Mob: +86-15325666295 (WhatsApp & Wechat ID)

Website: www.sanfinetools.com

E-mail: jack@sanfinetools.com